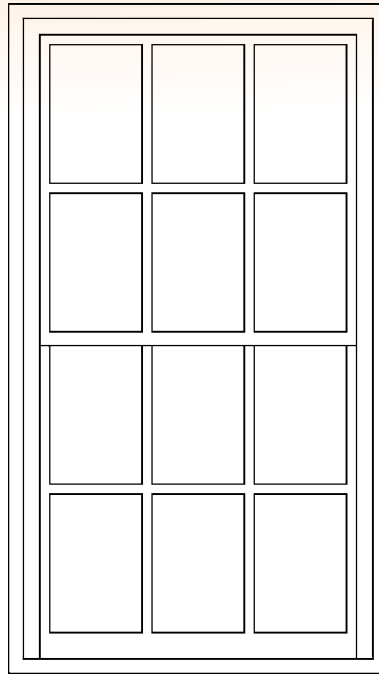
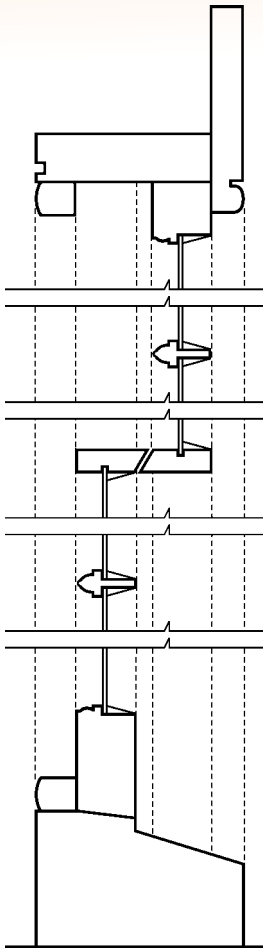
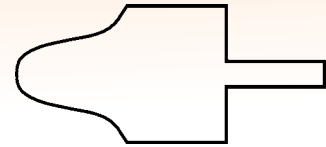


Typical Vertical  
Section through a  
Sash Window  
(Scale 1:5)

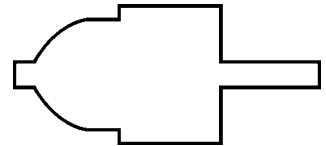


Typical Elevation of a  
Late 18<sup>th</sup>/Early 19<sup>th</sup> Century  
'Six Over Six Sash'  
(Scale 1:20)

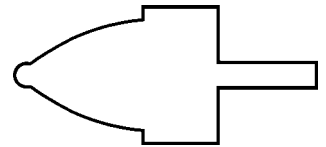
Examples of  
Glazing Bars  
(Scale 1:1)



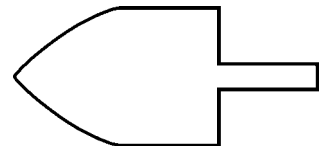
'Lamb's Tongue'



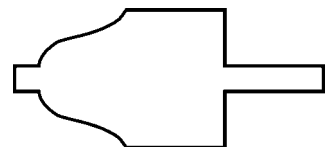
'Ovolo'



'Astragal'

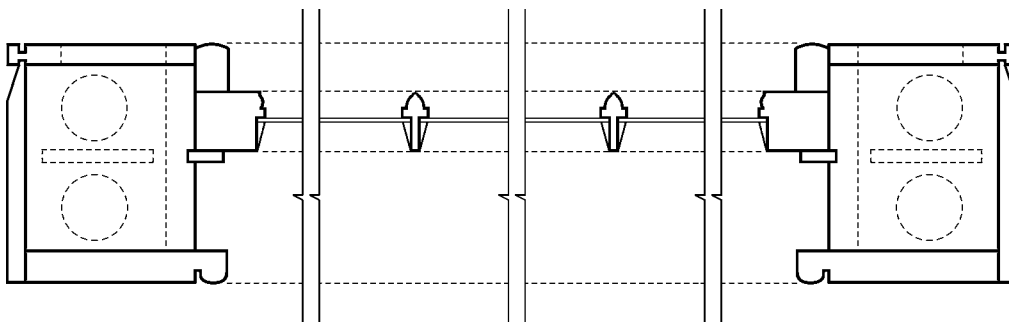


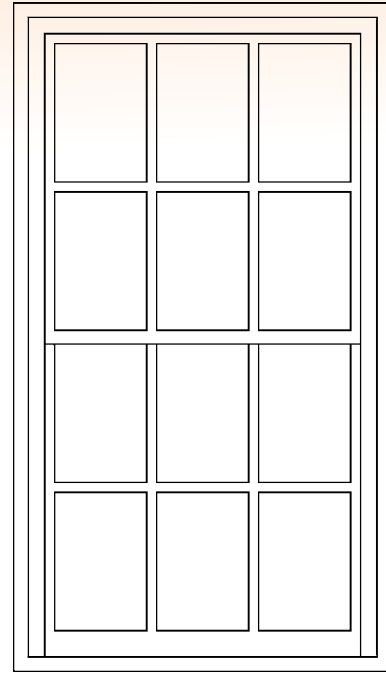
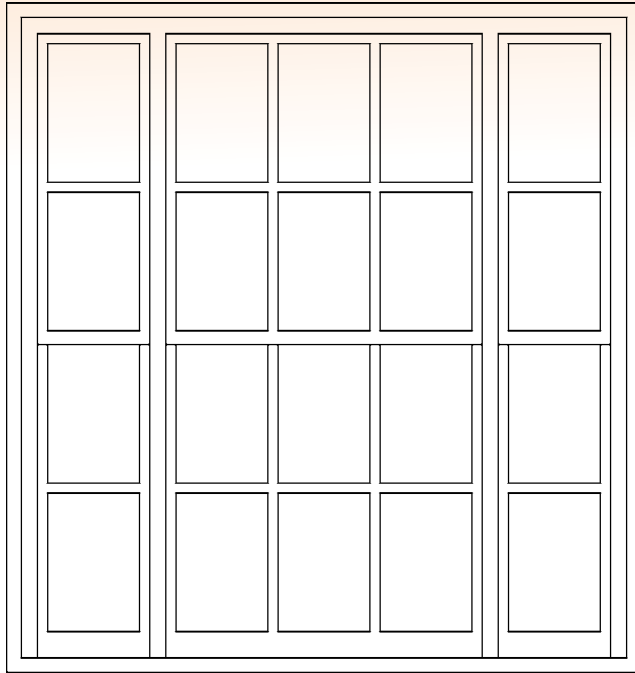
'Gothic'



'Ogee'

Typical Horizontal Section  
through a Sash Window  
(Scale 1:5)





Example Elevation  
(Scale 1:20)

